



HOMELITE®

DIAPHRAGM PUMP

model 111DP2-1 INSTRUCTIONS AND PARTS LIST

INSTRUCTIONS

These instructions apply specifically to the Model 111DP2-1 4-cycle Diaphragm Pump. For general pump information, safety precautions and operation, please refer to the Homelite Pump Operators Manual which is packed with each unit.

The 111DP2-1 is driven by a Briggs and Stratton 4-cycle engine. Read the enclosed engine operating manual before starting the unit.

The engine has been drained for shipment; be certain to fill the crankcase to the indicated level with the proper grade of oil specified in the engine manual.

LUBRICATION:

The pump gear case is drained for shipment, and must be filled to the level of the filler plug with SAE 90 gear oil (Homelite 55291-B) before operation. Check the oil at weekly intervals to maintain this level.

The pump rod journal bearing should be greased at monthly intervals. Apply bearing grease at the journal fitting until fresh grease oozes from the journal.

PRIMING

The 111DP2-1 is self priming to lifts of 15 feet. To prime above 15 feet, remove the filler plug from the suction fitting and pour in about 2 quarts of water: Retighten the plug securely.

OPERATING HINTS:

Always use the strainer to prevent debris from clogging the valves.

Inlet (suction) connections to the pump must be air tight to prevent loss of vacuum.

Pump connections must be flexible; if a pipe is used, connect a short piece of flexible hose between the pipe and the pump.

The vertical discharge limit of this pump is 25 feet. Pumping to heights greater than 25 feet above the unit is not practical.

SAFETY PRECAUTIONS

This pump is designed for pumping water. It may be used for pumping other non-hazardous liquids, but under no circumstances should it be used for pumping hazardous material.

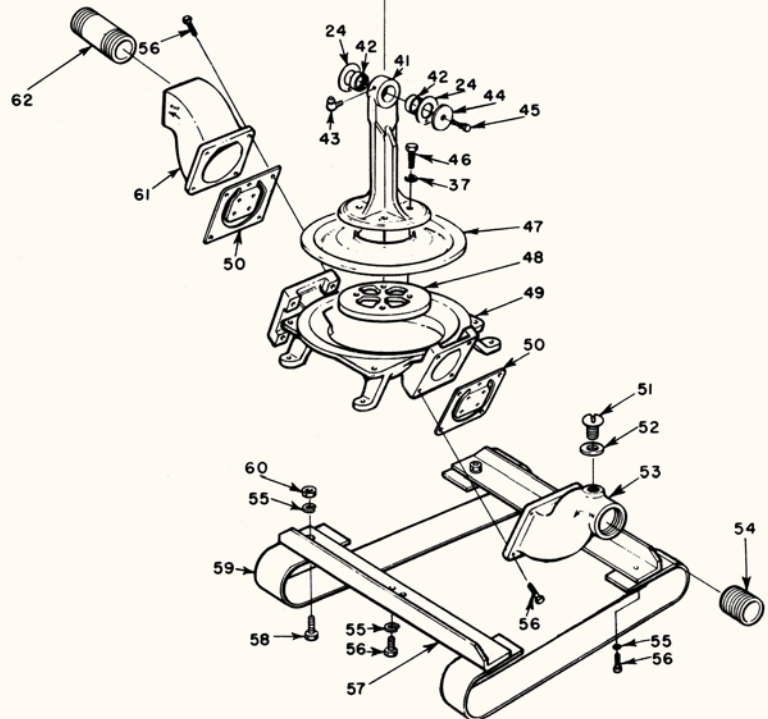
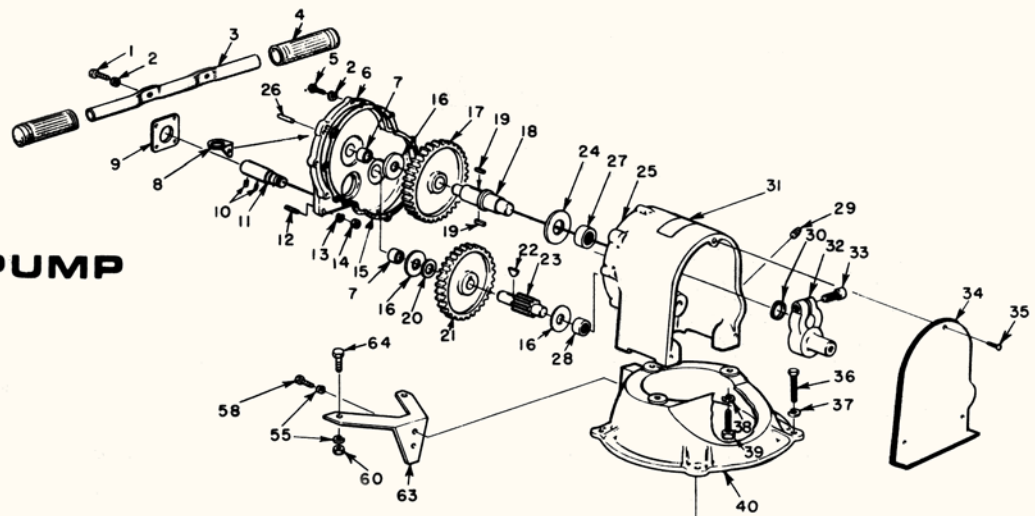
Do not fill the fuel tank while the engine is running, as this may cause a fire. Be sure to wipe up any spilled fuel before starting the engine.

Do not touch the hot muffler.



DIAPHRAGM PUMP

model 11DP2-1



No.	Description	Part No.	Qty.
	ENGINE-Briggs & Stratton (not shown)	54965	1
1	SCREW-hex hd., 1/4-20 x 1-3/4	80895	2
2	WASHER-lock, 1/4	83009	10
3	HANDLE-carrying	50759-1	1
4	GRIP-handle	59275	2
5	SCREW-hex hd., 1/4-20 x 1-1/4	80912	8
6	COVER-gear case w/bearings	A-50487	1
	Includes:		
7	BEARING-needle	50493	2
8	BRACKET-spanner wrench	62450-1	1
	WRENCH-2" spanner (not shown)	19189-B	1
9	GASKET-engine mounting	50666	1
10	SCREW-set, 10-32 x 3/8 (Nylok)	80514-2	2
11	SHAFT-extension	50488	1
12	STUD-5/16-24, 5/16-18	72787	4
13	WASHER-lock, 5/16	83030	4
14	NUT-5/16-18	81018-1	4
15	GASKET-gear case	50485	1
16	WASHER-thrust, small	50471	3
17	GEAR-main	73866-1A	1
18	SHAFT-drive	A-51220	1
	Includes:		
19	KEY	27752	2
20	SPACER	50496	1
21	GEAR	74352-1	1
22	KEY-Woodruff, #61	66612	1
23	SHAFT-pinion	50474	1
24	WASHER-thrust, large	50483	3
25	CASE-gear w/bearings	A-50492	1
	Includes:		
26	PIN-dowel	74332	2
27	BEARING-needle	74252-S	1
28	BEARING-needle	50493	1
29	PLUG-pipe	50949	1
30	SEAL-Garlock	74333	1
31	DECAL	24581	1
32	CRANK	73858-5	1
33	SCREW-cap, 1/2-13 x 1-1/2	80423	1
34	SHIELD-crank	50731-1	1
35	SCREW-thumb, 1/4-20 x 1/2	51247	3
36	SCREW-hex hd., 3/8-16 x 1-1/2	80097-3	4
37	WASHER-lock, 3/8	83018	8
38	WASHER-lock, 1/2	83020	3
39	SCREW-hex hd., 1/2-13 x 1-3/4	80627	3
40	BODY-pump (upper)	50464-2	1
41	ROD-pump	A-51221	1
	Includes:		
42	BEARING-needle	74121-S	2
	PIN-(not shown)	76982	1
43	FITTING-grease	50911	1
44	WASHER	73857	1
45	SCREW-hex hd., 3/8-16 x 3/4	80171	1
46	SCREW-hex hd., 3/8-16 x 1-1/8	80374-1	4

No.	Description	Part No.	Qty.
47	DIAPHRAGM	50473	1
48	CAP-diaphragm	50479-1	1
49	BODY-pump (lower)	A-51223	1
	Includes:		
	PIN (not shown)	54890-1	1
50	VALVE AND INSERT	A-50468	2
51	PLUG-filler	54858-6	1
52	SLINGER	76885-A	1
53	FITTING-suction	A-51222	1
	Includes:		
	PIN (not shown)	54890-1	1
54	FITTING-pipe, suction	75663-1	1
55	WASHER-lock, 5/16	83030	10
56	SCREW-hex hd., 5/16-18 x 1	80085-1	12
57	ANGLE	50838-1	2
58	SCREW-hex hd., 5/16-18 x 7/8	80084-1	4
59	SKID	50533-1	2
60	NUT-5/16-18	81162	4
61	FITTING-discharge	50466-2	1
62	FITTING-pipe, discharge	50926-1	1
63	SUPPORT-engine	50484-1	1
64	SCREW-hex hd., 5/16-18 x 1-1/2	80087	2
	STRAINER (not shown)	54702-A	1
	OIL-gear (not shown)	55291-C	1

ALWAYS FURNISH MODEL AND SERIAL NUMBER WHEN ORDERING PARTS.